

## Raymond James Client Access

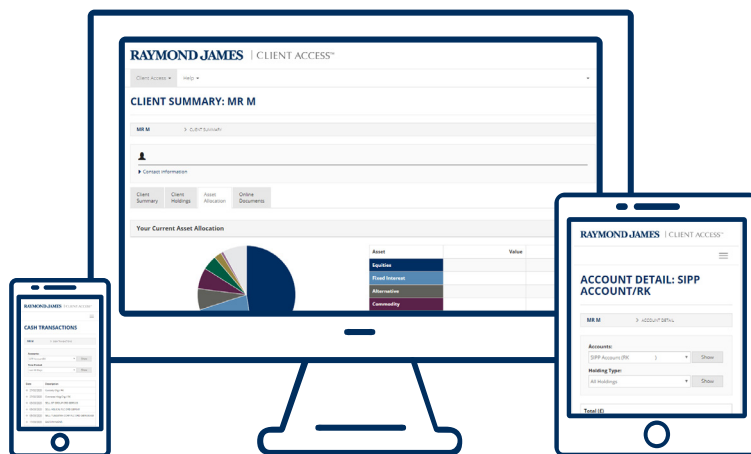
---

Raymond James' secure online site, Client Access, provides you with a convenient way to access all your Raymond James accounts, placing your investment information at your fingertips.

Raymond James Client Access enables you to view your holdings, valued at the previous business day's closing price, detailed at the account level as well as with a consolidated total where you have multiple accounts.

You are also able to view transaction information for the last two years, including any cash transactions such as buys and sells, cash dividends and cash transfers.

Client Access provides you with the most up-to-date information on your Raymond James accounts in an easy-to-use format – 24 hours a day, 7 days a week – via any computer, smart phone or tablet.



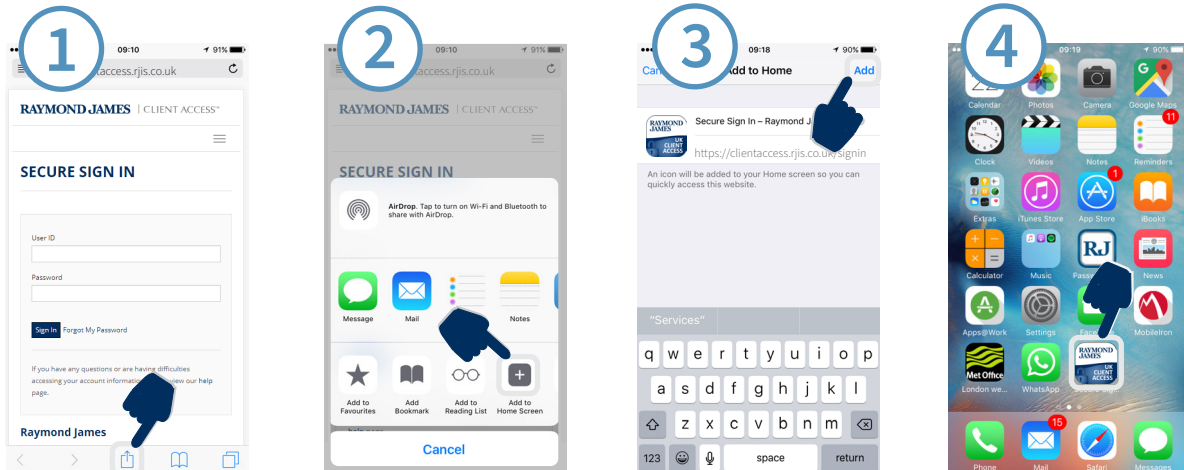
Client Access is fully responsive on the majority of mobile devices, including smart phones and tablets, and is easily accessible following the download of the Client Access favicon to your phone's home screen.

Please see overleaf for instructions on how to add the favicon as a shortcut to the home screen of your mobile device.

## How to add Client Access to your mobile device

Go to: [clientaccess.rjis.co.uk](https://clientaccess.rjis.co.uk)

### iPhone:



Click the upload button at the bottom of the screen

Click "Add to Home Screen"

Click "Add" in the top right corner

You will now see the shortcut icon on your home screen, for quick access to Client Access

### Android:



Click the action button in the top right corner of the screen

Click "Add shortcut on home screen"

You will now see the shortcut icon on your home screen, for quick access to Client Access

*\*The design of the shortcut icon may differ, depending on the device you are using*

Please contact your Wealth Manager or Raymond James Client Services if you require any assistance on 020 3798 3500 or [RJISClientServices@RaymondJames.com](mailto:RJISClientServices@RaymondJames.com)

Raymond James Investment Services Limited is a member of the London Stock Exchange and is authorised and regulated by the Financial Conduct Authority. Registered in England and Wales number 3779657 Registered Office Ropemaker Place 25 Ropemaker Street London EC2Y 9LY. APPROVED FOR CLIENT USE